



## The World's Fastest Wireless Transmission Projectors

### Easy wireless projection (PT-LB50NTU)

- World's fastest data transfer\*<sup>1</sup>
- Wireless PC motion/sound streaming\*<sup>2</sup>
- Abundant wireless functions, including secondary display transmission and 16-window index style
- Simple, user-friendly settings



There are no cables to connect, so projector setup is quick and easy, and you have full layout flexibility. Wireless Manager ME 3.0 software (provided) increases transmission speed by five times compared to our previous model\*<sup>6</sup>. You get fast, smooth, stress-free transmission even with large video files\*<sup>2</sup>. You can copy Wireless Manager to a memory card and take it with you on a trip. This lets you enjoy wireless transmission even at presentation sites where the computer doesn't have the software\*<sup>7</sup>.

### Daylight View 2 technology

- Looks max. 50% brighter\*<sup>3</sup>
- Vivid colors in a bright room
- Auto operation with ambient light sensor (ALS)



### High power and portability

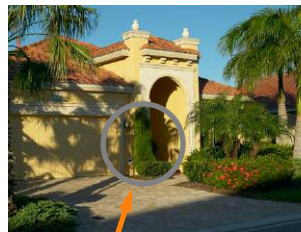
- Bright 2,000 lumens
- Ultra-lightweight: 4.0 lbs/4.2 lbs (1.8 kg/1.9 kg)\*<sup>4</sup>
- Slim and compact design: 2-1/4" (57-mm) thickness\*<sup>5</sup>

### Quick operation

- 2-second speed start
- Auto search
- Real-time keystone correction
- Operation assistance
- Direct power off

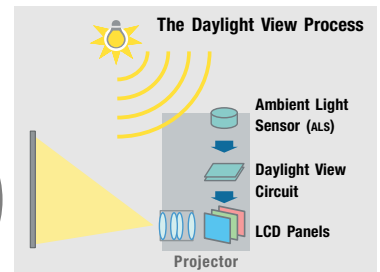
### Wireless Prompter (Secondary Display) Function

This allows transmission of content other than what's displayed on your PC. For example, you can display text documents on your PC screen while projecting slide from your Microsoft® PowerPoint® presentation\*<sup>8</sup>. You get a host of other convenient wireless transmission functions too, such as area-specified transmission and a multi-live mode for simultaneous display of up to 16 PCs.



### Daylight View 2

A built-in sensor measures the ambient light, and the halftone colors and brightness level are adjusted accordingly in real time. Viewing brightness is increased up to 150%\*<sup>3</sup>.



\*<sup>1</sup> As of February 7, 2006, according to our own evaluation of wireless transmission from PC to projector. Wireless projection function is featured on the PT-LB50NTU only.

\*<sup>2</sup> Content and DVDs set with DRM (Digital Rights Management) cannot be transmitted.

\*<sup>3</sup> Comparison with Daylight View 2 turned On and Off, using an 80-inch screen and ordinary meeting room lighting of 400 lux. (Projector: PT-LB50NTU, screen gain: 2.6)

\*<sup>4</sup> 4.0 lbs/1.8 kg for the PT-LB50U and PT-LB50SU; 4.2 lbs/1.9 kg for the PT-LB50NTU.

\*<sup>5</sup> Legs and protrusions not included.

\*<sup>6</sup> PT-LB20NTU

\*<sup>7</sup> Transmission will be slower than transmission with a computer that has the software installed. Also, certain functions may not be available.

\*<sup>8</sup> With Wireless Manager ME 3.0, you can use the projector screen as a secondary monitor for the PC. In this setup, Microsoft® PowerPoint® must be set to "Show Presenter View."

## Rear View



## Specifications

<b>Power supply</b>	100–240 V AC, 50/60 Hz	<b>On-screen menu</b>	17 languages: English, French, German, Spanish, Italian, Korean, Russian, Chinese, Japanese, Swedish, Norwegian, Danish, Portuguese, Polish, Hungarian, Czech, and Thai	<b>Remote Control Unit</b>	
<b>Power consumption</b>	240 W (Approx. 2 W in standby mode with fan stopped)	<b>Installation</b>	Front/rear ceiling/desk (menu selection)	<b>Power supply</b>	3 V DC (button battery x 1)
<b>LCD panel</b>	4:3 aspect ratio, micro lens array	<b>Built-in speakers</b>	1-9/16" x 25/32" (4 x 2 cm) x 1 (oval), 1.0 W (monaural) output power	<b>Operation range**</b>	Approx. 23 feet (7 m) when operated from directly in front of the signal receptor
<b>Panel size</b>	0.6" (15.24 mm) diagonal	<b>Terminals</b>		<b>Dimensions (W x H x D)</b>	2-1/16" x 4-27/32" x 13/16" (52 x 123 x 21 mm)
<b>Display method</b>	Transparent LCD panel (x 3, R/G/B)	<b>PC 1 IN</b>	D-sub HD 15-pin x 1	<b>Weight</b>	2.6 ozs. (74 g) (including batteries)
<b>Drive method</b>	Active matrix	<b>RGB signal</b>	R, G, B: 0.7 Vp-p, 75 ohms, Sync on green: 1.0 Vp-p, 75 ohms HD/SYNC, VD: TTL (positive/negative polarity compatible)	<b>Wireless LAN (PT-LB50NTU)</b>	
<b>Pixels</b>		<b>YPbPr signal</b>	Y: 1.0 Vp-p (including sync signal), 75 ohms; Pb, Pr: 0.7 Vp-p, 75 ohms	<b>Standard</b>	IEEE802.11b/g
<b>PT-LB50NTU/LB50U</b>	786,432 (1,024 x 768) x 3, total of 2,359,296 pixels	<b>PC 2 IN/PC 1 OUT</b>	D-sub HD 15-pin x 1 (input/output selectable using on-screen menu)	<b>Modulation</b>	
<b>PT-LB50SU</b>	480,000 (800 x 600) x 3, total of 1,440,000 pixels	<b>RGB signal</b>	R, G, B: 0.7 Vp-p, 75 ohms, Sync on green: 1.0 Vp-p, 75 ohms HD/SYNC, VD: TTL (positive/negative polarity compatible)	<b>IEEE802.11b</b>	Direct sequence spread spectrum (DS-SS) system
<b>Pixel configuration</b>	Stripe	<b>YPbPr signal</b>	Y: 1.0 Vp-p (including sync signal), 75 ohms; Pb, Pr: 0.7 Vp-p, 75 ohms	<b>IEEE802.11g</b>	Orthogonal frequency division multiplex (OFDM) system
<b>Lens</b>	Manual zoom (1:1–1:1.2), manual focus, F 1.6–1.9, f 18.8–22.6 mm	<b>PC 1 IN</b>	D-sub HD 15-pin x 1	<b>Transmission system</b>	
<b>Lamp</b>	165 W UHM™ lamp	<b>RGB signal</b>	R, G, B: 0.7 Vp-p, 75 ohms, Sync on green: 1.0 Vp-p, 75 ohms HD/SYNC, VD: TTL (positive/negative polarity compatible)	<b>IEEE802.11b</b>	CCK (11/5.5 Mbps), DQPSK (2 Mbps), DBPSK (1 Mbps)
<b>Colors</b>	Full color (16,777,216 colors)	<b>YPbPr signal</b>	Y: 1.0 Vp-p (including sync signal), 75 ohms; Pb, Pr: 0.7 Vp-p, 75 ohms	<b>IEEE802.11g</b>	64-QAM (54/48 Mbps), 16-QAM (36/24 Mbps), QPSK (18/12 Mbps), BPSK (9/6 Mbps)
<b>Brightness</b>	2,000 lumens	<b>VIDEO IN</b>	RCA pin x 1, 1.0 Vp-p, 75 ohms	<b>Transmission speed</b>	
<b>Uniformity</b>	85%	<b>S-VIDEO IN</b>	Mini DIN 4-pin x 1	<b>IEEE 802.11b</b>	11 Mbps, 5.5 Mbps, 2 Mbps, 1 Mbps
<b>Contrast</b>	400:1*1 (full on/full off)	<b>AUDIO IN</b>	RCA (L, R) x 1, 0.5 Vrms (for VIDEO/S-VIDEO)	<b>IEEE 802.11g</b>	54 Mbps, 48 Mbps, 36 Mbps, 24 Mbps, 18 Mbps, 12 Mbps, 9 Mbps, 6 Mbps
<b>Scanning frequency</b>		<b>PC AUDIO IN</b>	M3 (L, R) x 1, 0.5 Vrms	<b>Operation range**</b>	Approx. 98'5" (30 m)
<b>RGB</b>	Horizontal: 15–91 kHz, Vertical: 50–85 Hz	<b>AUDIO OUT</b>	M3 (L, R) x 1, 0–2.0 Vrms (variable)	<b>Frequency range</b>	2,412 MHz–2,462 MHz
<b>YPbPr</b>	480i (525i): fh 15.75 kHz; fv 60 Hz 576i (625i): fh 15.63 kHz; fv 50 Hz 480p (525p): fh 31.5 kHz; fv 60 Hz 576p (625p): fh 31.25 kHz; fv 50 Hz 720p (750p): fh 45 kHz; fv 60 Hz 1080i (1125i): fh 33.75 kHz; fv 60 Hz 1080i (1125i): fh 28.125 kHz; fv 50 Hz	<b>SERIAL</b>	Mini DIN 8-pin x 1 (RS-232C)	<b>Channels</b>	1–11 ch
<b>S-Video/Video</b>	NTSC, NTSC4.43, PAL-M, PAL60: fh 15.75 kHz; fv 60 Hz PAL, SECAM, PAL-N: fh 15.63 kHz; fv 50 Hz	<b>Power cord length</b>	6'7" (2 m)	<b>Supplied Accessories</b>	
<b>Projection size</b>	33–300 inches/838–7,620 mm diagonally	<b>Cabinet material</b>	Moulded material (ABS/PC)	<ul style="list-style-type: none"> <li>Power cord</li> <li>Wireless remote control</li> <li>Batteries for remote control</li> <li>VGA cable</li> <li>Carrying bag</li> <li>Wireless Manager ME 3.0 (CD-ROM)*3</li> </ul>	
<b>Throw distance</b>		<b>Dimensions (W x H x D)</b>	11-11/16" x 2-1/4" x 8-1/4" (297 x 57 x 210 mm)	<b>Optional Accessories</b>	
<b>PT-LB50NTU/LB50U</b>	3'7"–36'5" (1.1 m–11.1 m)	<b>Weight</b>		ET-LAB50 Replacement lamp unit	
<b>PT-LB50SU</b>	3'7"–35'9" (1.1 m–10.9 m)	<b>PT-LB50NTU</b>	4.2 lbs. (1.9 kg)	ET-PKB50 Ceiling mount bracket	
<b>Optical axis shift</b>	6:1 (fixed)	<b>PT-LB50U/LB50SU</b>	4.0 lbs. (1.8 kg)	ET-RM300 Full-function wireless remote control	
<b>Keystone correction range</b>	Vertical: ±30°	<b>Operating environment</b>		ET-ADSER Serial adapter (DIN 8-pin/D-sub 9-pin)	
		<b>Temperature</b>	32°–104°F (0°–40°C)		
		<b>Humidity</b>	20%–80% (no condensation)		

### NOTES ON USE

- The projector uses a high-voltage mercury lamp that contains high internal pressure. This lamp may break, emitting a large sound, or fail to illuminate, due to impact or extended use. The length of time that it takes for the lamp to break or fail to illuminate varies greatly depending on individual lamp characteristics and usage conditions.
- The brightness of the lamp will gradually decrease with use.
- The lamp, LCD panel, polarizing plate, and polarizing beam splitter (PBS) are consumable parts. These parts may need to be replaced during the guarantee period if the projector is used for six or more hours per day.
- The replacement cycle of the LCD panel, polarizing plate, and polarizing beam splitter (PBS) will be shortened if the projector is subjected to continuous use for six or more hours. Likewise, the replacement cycle of the lamp will be shortened if the power is frequently turned on and off or the projector is subjected to continuous use for 10 or more hours.
- Interruptions may occur in the wireless connection due to signal interference or PC conditions.

### To use wireless functions, a PC is required that meets the conditions given below:

<b>OS:</b>	Microsoft® Windows® 2000 Professional, Windows® XP Professional, Windows® XP Home Edition
<b>CPU:</b>	Pentium® III or higher, or other compatible processor (1 GHz or higher is recommended).
<b>Memory:</b>	256 MB or more
<b>Free hard disk space:</b>	60 MB or more
<b>CD-ROM drive:</b>	CD-ROM drive or DVD drive
<b>Wireless LAN:</b>	IEEE 802.11b/g compatible (built-in wireless LAN system or external IEEE 802.11b/g LAN card must be installed and running normally.) However, some IEEE 802.11g/b wireless LAN may not allow connection to the projector.
<b>Web browser:</b>	Internet Explorer 6.0 or later, Netscape Communicator 7.0 or later
<b>Direct X:</b>	DirectX® 8.1b or later must be installed.

Operation is not guaranteed for all computers that meet the above conditions

# Panasonic

Weights and dimensions shown are approximate. Specifications are subject to change without notice. Product availability differs depending on region and country. This product may be subject to export control regulations. UHM is a trademark of Matsushita Electric Industrial Co., Ltd. VGA and XGA are trademarks of International Business Machines Corporation. Windows and PowerPoint are either registered trademarks or trademarks of Microsoft Corporation in the United States and/or other countries. All other trademarks are the property of their respective trademark owners. Projection images simulated.



PT-LB50NTU2-06MAR5K Printed in Japan.