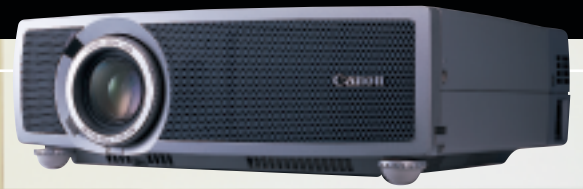


Canon

Micro-portable
Multimedia Projector

LV-S1



NATIVE
SVGA

Look no further for the ideal fusion of style, performance, and value.

Don't be fooled by its size, even though it's one of the most compact projectors you'll find—the Canon LV-S1 is by no means a lightweight. Not only does the LV-S1 come loaded with a full array of great features, but it also incorporates advanced Canon technology for superior projection quality.

1,000 ANSI Lumens

Bright, Clear Images

The LV-S1 provides 1,000 ANSI lumens for bright projection from a variety of input sources, and can project a 200" image at 90% uniform brightness. It delivers sharp Native SVGA resolution (800 x 600), and can also project XGA (1,024 x 768).

Quiet Operation

A portable projector is just not effective if it's making a lot of noise. To help make sure that your presentation is distraction-free, the LV-S1 incorporates an intelligent design that minimizes fan noise to just 37dB.

Compact & Stylish Design

Weighing only 6 pounds, the portable and stylish LV-S1 is light enough to carry anywhere, making it ideal for the presenter on the go.

www.canonprojectors.com

Canon Optical Technology

The core of the LV-S1 is a newly developed optical box that contains Canon advanced technology. The optical box is the key component of any projector, responsible for processing light within the unit. By using a more efficient process than conventional models, the LV-S1 offers superior color fidelity for all your projection needs.



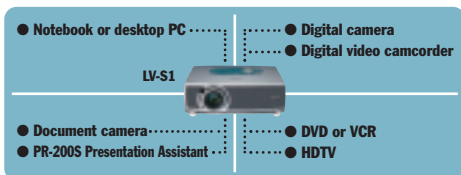
The new Canon optical box (illustrated above) is designed to provide excellent color reproduction quality.

Diverse Input Sources

Many different devices and systems are supported, including both Windows and Mac platforms. During presentations, the optional PR-200S can be connected for on-the-fly scanning and projection. Component Video input is available for high-quality display of DVD and HDTV video content.



PR-200S Presentation Assistant



Flexible Image Settings

The Image Select feature lets you customize the display to best suit your source image. Sharpness, contrast, gamma, and other variables can be easily adjusted using the on-screen menus, and settings can then be saved for recall at a later time. Two presentation modes (High Contrast, Cinema) are provided.



Convenient Features

Digital Keystone Correction gives you a square, undistorted image for angles up to +/-20 degrees, and 16X Digital Zoom enlarges sections of the projected image for a closer look.

Plug & Play Connectivity

Simply connect the LV-S1 to your computer or AV equipment and get started right away—the projector automatically identifies the input signal and handles all necessary adjustments for you.

Easy Operation

A wireless remote control offers easy access to all functions from anywhere in the room. The USB mouse control function allows you to operate some PC functions with the remote as well.

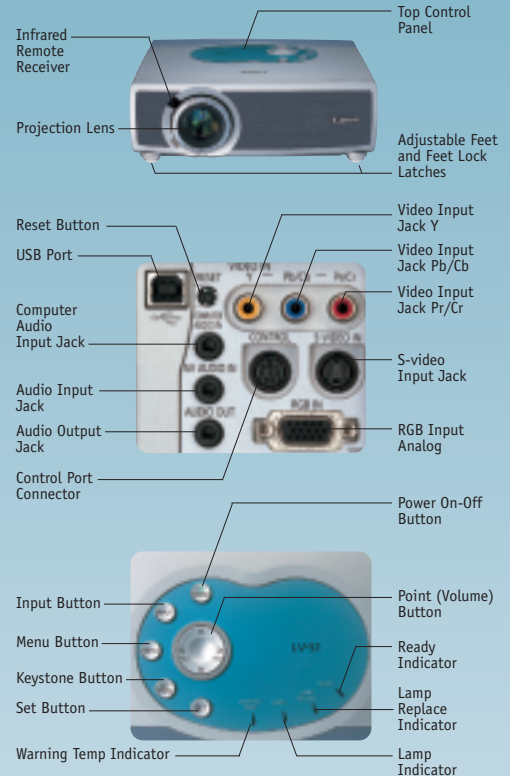
LV-S1 Kit Contents:

- LV-S1 Projector • Power Cable
- VGA Computer Cable • Wireless Remote Control (and Lithium Battery)
- Lens Cap • Soft Carrying Case
- Warranty Card • User Manual

Available Options:

- Remote Control with Mouse and Laser Functions (LV-RC01)
- Mouse Control Cable for PS/2 (LV-CA25)
- Mouse Control Cable for Serial (LV-CA26)
- Mouse Control Cable for ADB (LV-CA27)
- Ceiling Mount Adapter (LV-CL06)
- Replacement Lamp (LV-LP12)
- PR-200S Presentation Assistant

Nomenclature



Specifications

Type: Micro-portable LCD Projector
LCD Panel: 0.7" polysilicon active matrix TFT x 3. 4:3 aspect ratio
Number of Pixels: 480,000 800(H) x 600(V)
Supported Display Standards: Native SVGA, XGA (Compression), VGA
Light Source: 150W UHP lamp
Brightness: 1,000 ANSI lumens
Uniformity: 90%
Contrast Ratio: 350:1 (All white/All black)
Horizontal Resolution: 500 TV lines
Projection Lens: 28.7 to 34.5mm, F1.6 to 1.78, x1.2 zoom
Lens Shifting: 19:1
Elevation Adjustment: Up by 10.7° (One-touch adjustment)
Projected Image Size Diagonal (Projection Distance): **WIDE mode:** 40" (5.2ft/1.6m), 100" (13.1ft/4.0m), 150" (20.0ft/6.1m), 200" (26.6ft/8.1m) **TELE mode:** 34" (5.2ft/1.6m), 83" (13.1ft/4.0m), 123" (20.0ft/6.1m), 166" (26.6ft/8.1m)
Digital Keystone Distortion Compensation Angle: ±20°
Noise: 37dB (at low fan speed)
Color System: NTSC/PAL/SECAM/NTSC 4.43/PAL-M/PAL-N
Supported Computers: PC, Macintosh compatible, workstation (Some workstations are not supported)
Scanning Frequency: 15 to 80kHz for horizontal sync, 50 to 100Hz for vertical sync, 100MHz for dot clock
Audio Output: 1W monaural
Built-in Speaker: 1.4" x 0.8" (35 x 20mm), x1
Rated Supply Voltage: 100 to 120/200 to 240V AC, 50/60Hz
Power Consumption: 250W
Ambient Operation Temperature: 41 to 95°F (5 to 35°C)
Storage Temperature: 14 to 140°F (-10 to 60°C)
Dimensions (W x H x D): 10.2 x 3.0 x 9.1 in./260 x 76 x 230 mm excluding legs (Legs: 0.6 in./15mm)
Weight of Main Unit: Approx. 6.17lbs (2.8kg)

Errors and omissions excepted. Weight and dimensions are approximate. Specifications are subject to change without notice. Canon is a trademark of Canon Inc.

Canon KNOW HOW™

Canon U.S.A., Inc.
 One Canon Plaza
 Lake Success, NY 11042, U.S.A.

Canon Canada Inc.
 6390 Dixie Road
 Mississauga,
 Ontario L5T 1P7, Canada

Canon Mexicana, S. DE R.L. DE C.V.
 Periférico Sur No. 4124, 5º y 6º pisos,
 Col. Ex-Rancho de Anzaldo,
 01900 México, D.F.

Canon Latin America
 703 Waterford Way Suite 400
 Miami, FL 33126, U.S.A.

1-800-OK-CANON www.canonprojectors.com